



Concours How-to's

Removing Stains From Buildsheets

**Approx Time Needed
For Completion:**
Approx 8 mins

**Supplies/Equipment
Needed:**

- Disposable backing pan
- Silicon and wax or wax and grease remover
- One window screen
- Work area free of open flames and well ventilated.
- Optional, cheap brush

Buildsheets were the single sheet pieces of paper that the line workers used to guide the assembly of every specific car during the second half of assembly. There were dozens of each printed for use on the line as well as at the sub-assembly stations situated around the plant.



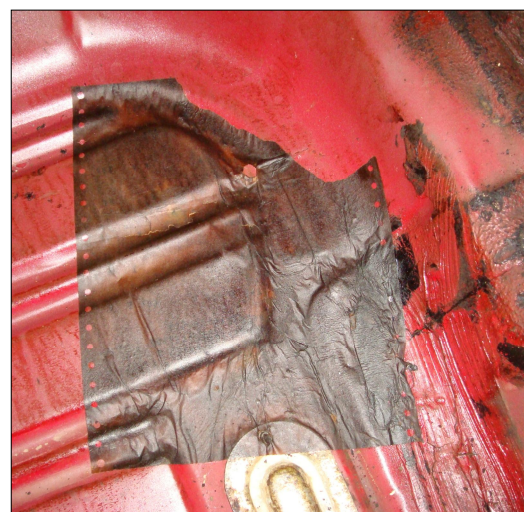
In most cases the buildsheet showed a color or abbreviated number to help workers identify the needed part so that identification could be quick and accurate. Unfortunately most of the copies used to build our cars were destroyed, either intentionally or due to age and the elements.

Sometimes a restorer gets lucky and finds one copy between the underlayment and the floor boards of his/her car. Unfortunately the years of direct contact with the tar based underlayment results in a heav-

ily stained and discolored piece of paper. Many, many years ago, after some experimentation, I found a method that can vastly improve the readability of these old historical helpers and that method is described and illustrated on the following pages.

Like most endeavors this is only the way that has worked for me. Your results may vary and there is likely a better method, but this is what has worked for me.

Hope it helps in your efforts to produce a better concours restoration and your enjoyment of that task.



Foreword

As always, set up your work space in a well lit area, with good ventilation and NO open flames. Have a strong sturdy table top to work on and wear hand, skin and eye protection where you deem necessary.

Gather up and organize your equipment as outlined on the first page of this article. The strength of the wax and grease or silicon and wax remover that you uses can vary allot. All will work, you just need to monitor the progress of the process and remove the buildsheet once you've reached an acceptable level of cleaning.

As you can see from the picture below this buildsheet had been stained from the direct contact with the carpet underlayment. Less than some examples—more than other ones. But enough to make reading the type difficult in many areas.

For this article I choose to cut off one corner of the buildsheet as a control, so that we could compare the finished product to what we started out with. You don't need to do this with your buildsheet.



Step #1

Take your baking pan and manually smash the raised ridges on the bottom of the pan. These are designed to keep the meat from sitting on the bottom of the pan during cooking. For us it just means that we'll have to use more of the cleaning product



Next place the buildsheet in the bottom of the pan.

Step #2

Step #3

Then pour the cleaning product into the pan. I normally try not and pour it directly on the buildsheet but to a corner and let the solution flow over the buildsheet from there.

I normally add only enough to cover the paper plus maybe 1/8--1/4 of an inch.

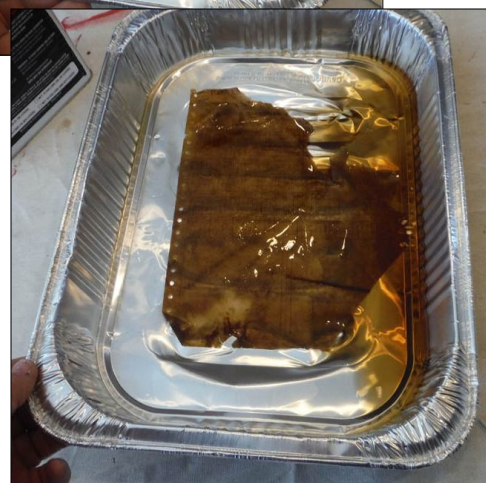


Step #4

Next gently move the liquid around the pan, the agitation will help speed up the cleaning process. Keep doing this for about 2 minutes – watching the cleaning progress and evaluating as you go. When you've reached a point where the majority of the stains are gone you are ready to stop.

At times on a heavily stained buildsheet in areas. In those cases I've used a cheap throw away chip brush to focus some cleaner of a spot or two. Be careful as you intensify on one area as its easy to tear the soaking paper but at times this process can produce some improved cleaning.

Notice how quickly the color of the cleaning product changes as it removes the stain from the paper . Difference can be seen in the picture at the bottom of this page compared to the ones in the top right.



Step #5

Notice the color of the wax and grease remover after only 2 minutes. Notice the strong amber color removed from the buildsheet and is now suspended in the liquid. Also the lighter shade of paper now. We're just about done.

Folds and Corrections

If you have some areas on your buildsheets where the paper is folded upon itself, now is the time to correct that. You can take a small screw driver, pencil tip or in this example, the handle of a paint brush and unfold the section back on itself.



Hold it in place for about 30 seconds so that it starts taking on its original shape. Move carefully and slowly.

Step #6

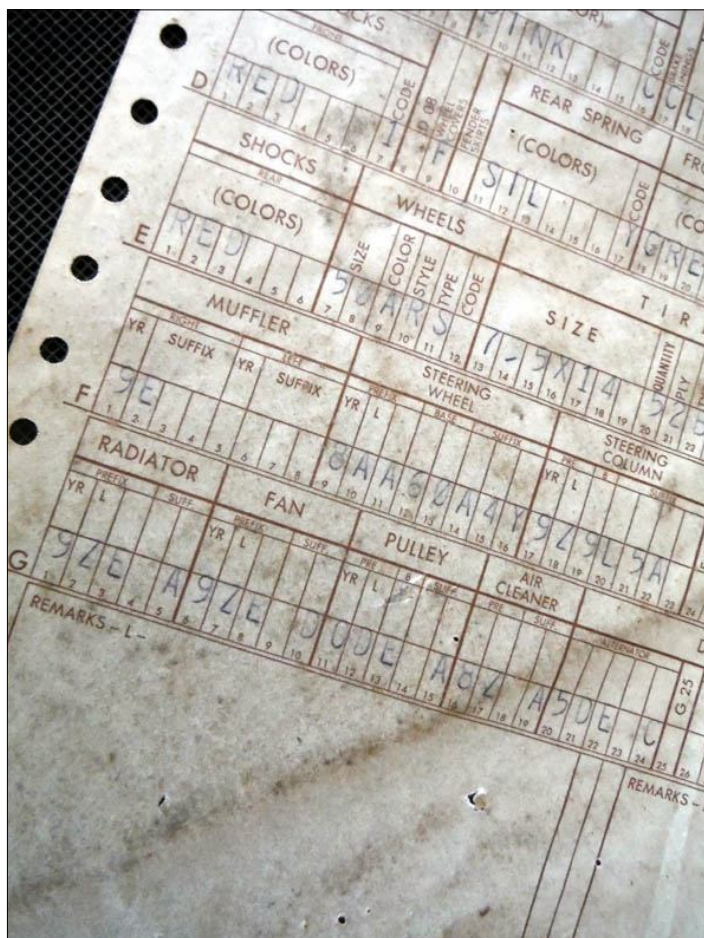
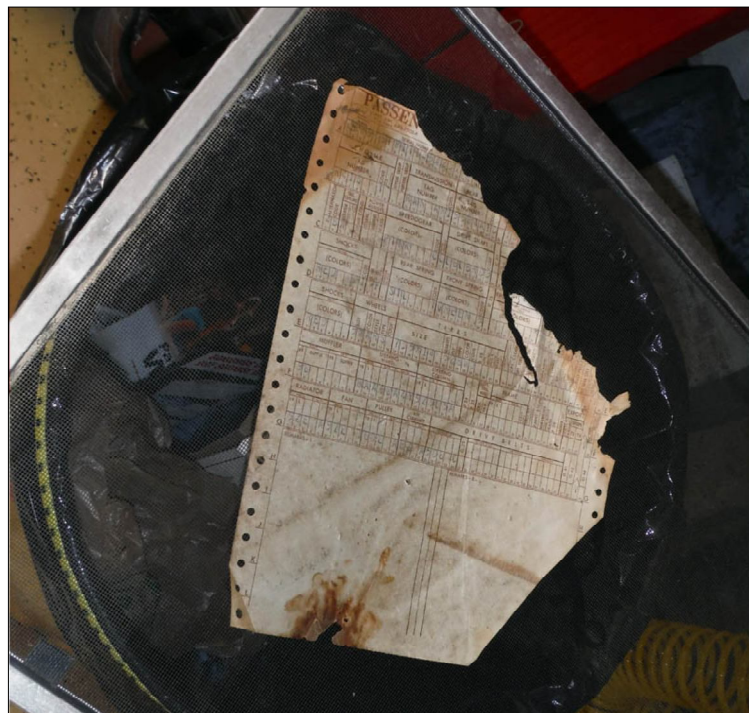


Now remove the buildsheet from the pan carefully and place it on a screen. Using the screen allows the sheet to dry without creating a bond to the material it's drying on. Total time of soaking for this sheet was 3 minutes.



Step #7

Allow the sheet to completely dry (cleaning product to evaporate) in a well ventilated area away from a strong breeze or open flame. Since the process is allot like dry cleaning this step does not take long.



Conclusion

Here is a close up shot of the finished product. Note how much more legible the original print is so that the now the information can be used in your restoration project or sharing with others in discussions.