



Replacing Glued-in Rearview Mirror

**Approx Time Needed
For Completion:** 30-60
mins

**Supplies/Equipment
Needed:**

- Measuring tape or ruler
- Masking tape & marking method
- Safety razor blade
- Commercially available interior mirror bracket adhesive
- Acetone
- Eye and hand protection
- Heat gun
- Clean, well ventilated working area
- Fixture to support the windshield during process

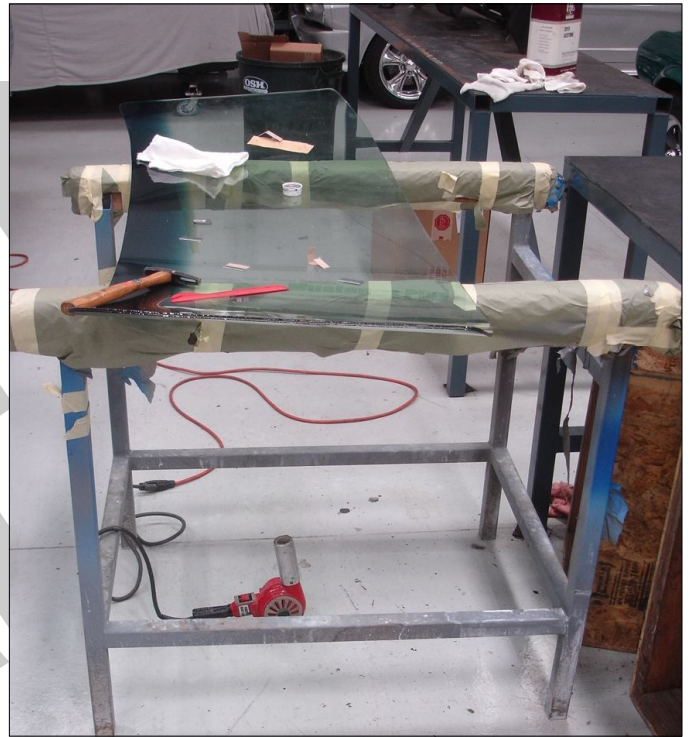
Starting in 1969 Production Mustangs and many other Ford and Mercury models had an interior rearview mirror mounting bracket that was glued to the interior surface of the laminated windshield. The glue used was a special glue formulated for the purpose and can be difficult to remove.

Today when it comes time to replace the windshield of your classic car there is often a bracket already attached to the replacement windshield,, unfortunately it is often the incorrect one for your application and will need to be removed and replaced if your going to use the original mirror in your concours restoration.

In the following pages we documented with pictures and text one successful replacement using a new windshield that was going to be installed in a 1969 Mustang. It is likely only one of many methods to accomplish this task but it is the one that worked for me in this situation.

Setup

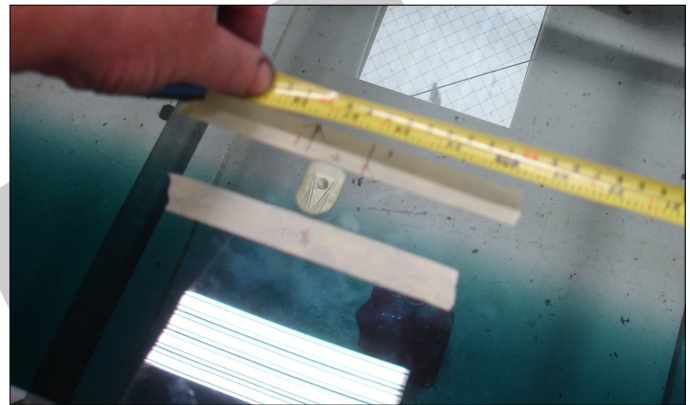
Position the windshield on a sturdy fixtures of some type. You will be prying, striking and moving around the windshield and you want to insure that it can not be tipped, dropped or otherwise damaged during this process. I positioned a heat gun on the floor below the surface but at this point did not turn it on until needed



Step #1

First it will be important in the long run to record and mark where the current mirror bracket is mounted. This can be done many different ways and allows you to confirm that it was placed centered in the replacement windshield and can provide landmarks and measurements to help you place the correct mounting bracket when the time comes.

The center line and other measurements can be transferred to the exterior of the windshield but there is the chance that by doing that the thickness of the glass can alter the exact location from one side of the glass to the other



In my effort I placed a section of masking tape over and above the incorrect mounting bracket. Marked on the bracket the center of the bracket at the top and bottom edge then transferred that mark to the masking tape. Lining up the center lower and upper mark I placed a section of masking tape along the top edge of the windshield and drew a

straight line between the two center marks on the masking tape and bracket to locate what should be the center of the windshield on the top edge. Then I made a cardboard template to copy the upper and lower inner tape locations (top and bottom of the bracket centering the template on the upper masking tape mark.



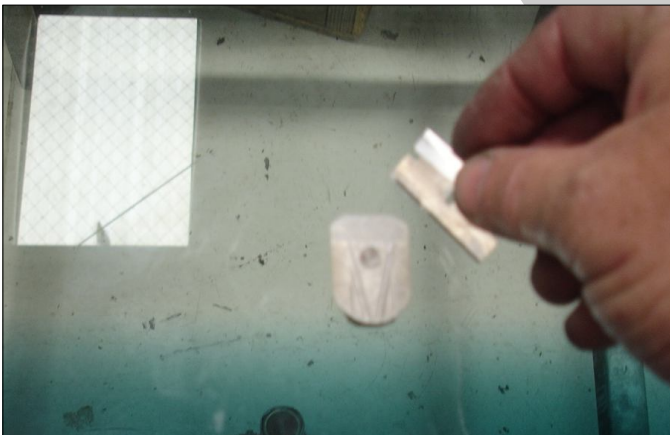
Step #2

Next I poured a small amount of acetone in the container cap and poured it around the bracket I was planning on removing and let it sit and soak for approximately fifteen minutes. At the same time I turned on the heat gun that I had positioned on the floor below where the windshield was resting. During this process I monitored that the heat never of the windshield never became uncomfortable to touch from the bottom side of the windshield.



Step #3

During the process of soaking and warming I continued to check the temperature of the glass and used a razor to push the liquid, as needed, to the mount.



Step #4

At this point I placed the sharp edge of a safety razor against the base of the mirror mount hoping that it would work as a very thin wedge as well as focus the small amount of force at the glue, not the glass nor the bracket.

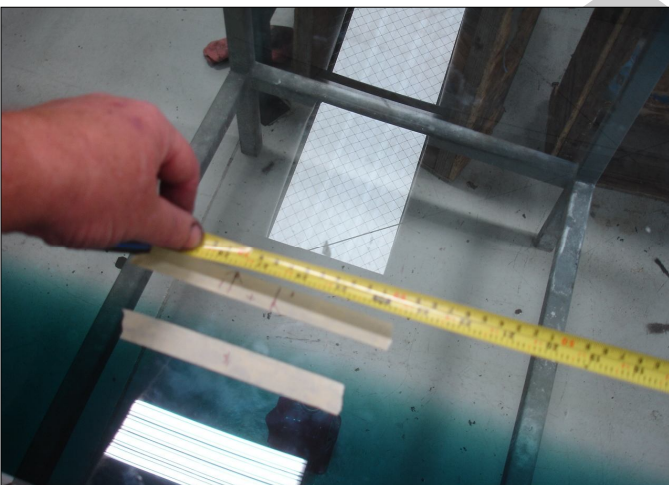
Checked the inner windshield surface and looked for any remaining adhesive, which if found, I would have removed with the edge of the razor carefully. Turn off heat gun and make sure it remains away from anything flammable till fully cooled.



With a quick strike of a small tack hammer the bracket popped off. Looking back it would have been a good idea to wrap the outer (non-striking surfaces) of the hammer head with duct tape or a couple of coats of masking tapes to reduce the chance that I would scratch the glass as I slid it across the surface of the glass to strike the razor.



Step #5

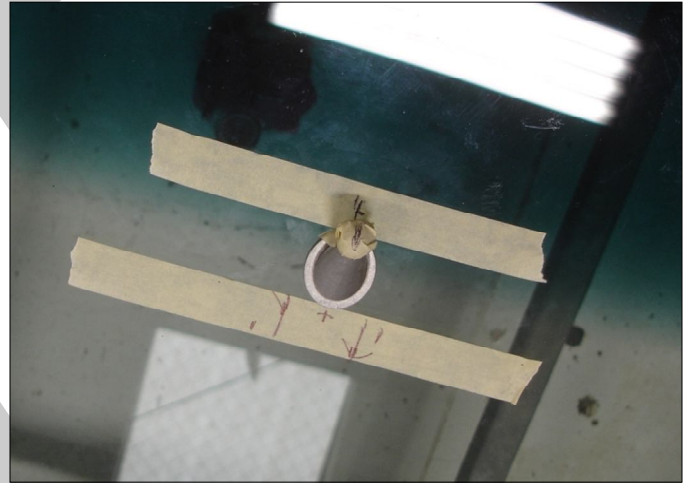


Next step is to determine where the new bracket will be located by using the measurements, marks and templates we made and documented in the first steps of this process

Step #6

Using those landmarks and measurements mark the center of the bracket (top and bottom edge) and position it on the windshield and test to see if your ready to secure it in place.

Once your happy with everything use the adhesive for the bracket and following the instructions on the package, mount the bracket.



Step #7



After waiting the recommended time period, test the bracket to make sure its secured then remove measuring guides and area. Task done.

Conclusion

Evaluated the methods and process offered in this article before you attempt this. Review other sources and suggestions before you choose what is best for your situation. The author, ConcoursMustang.com and its owners assume no responsibility for damage resulting from you following these suggestions. Use your best judgment, safe working practices and common sense. Good luck with your efforts